

ordering information

Low profile Silk+ offers the possibility to treat small arteries down to Ø 1.5mm.

| | Reference | Vessel Ø (mm) | | Silk+ length at nominal ø (mm) | | Unconstrained stent | | Delivery catheter |
|---------------|------------------|---------------|--------------|--------------------------------|------|---------------------|-------------|-------------------|
| | | prox | dist | prox | dist | Ø (mm) | Length (mm) | |
| Silk+ | SILK 2,0x15 | 1,50 to 2,25 | | 15 | | 2,5 | 10 | VASCO+21 |
| | SILK 2,0x20 | | | 20 | | | 11 | |
| | SILK 2,5x15 | 2,00 to 2,75 | | 15 | | 3,0 | 10 | VASCO+21 |
| | SILK 2,5x20 | | | 20 | | | 13 | |
| | SILK 2,5x25 | | | 25 | | | 16 | |
| | SILK 3,0x15 | 2,50 to 3,25 | | 15 | | 3,5 | 10 | VASCO+21 |
| | SILK 3,0x20 | | | 20 | | | 13 | |
| | SILK 3,0x25 | | | 25 | | | 16 | |
| | SILK 3,0x30 | | | 30 | | | 19 | |
| | SILK 3,5x15 | 3,00 to 3,75 | | 15 | | 4,0 | 11 | VASCO+21 |
| | SILK 3,5x20 | | | 20 | | | 12 | |
| | SILK 3,5x25 | | | 25 | | | 14 | |
| | SILK 3,5x30 | | | 30 | | | 15 | |
| | SILK 3,5x35 | | | 35 | | | 17 | |
| | SILK 4,0x15 | 3,50 to 4,25 | | 15 | | 4,5 | 10 | VASCO+21 |
| | SILK 4,0x20 | | | 20 | | | 12 | |
| | SILK 4,0x25 | | | 25 | | | 14 | |
| | SILK 4,0x30 | | | 30 | | | 16 | |
| | SILK 4,0x35 | | | 35 | | | 18 | |
| | SILK 4,0x40 | | | 40 | | | 20 | |
| SILK 4,5x15 | 4,00 to 4,75 | | 15 | | 5,0 | 8 | VASCO+21 | |
| SILK 4,5x20 | | | 20 | | | 10 | | |
| SILK 4,5x25 | | | 25 | | | 12 | | |
| SILK 4,5x30 | | | 30 | | | 15 | | |
| SILK 4,5x35 | | | 35 | | | 17 | | |
| SILK 4,5x40 | | | 40 | | | 19 | | |
| SILK 5,0x25 | 4,50 to 5,25 | | 25 | | 5,5 | 11 | VASCO+25 | |
| SILK 5,0x30 | | | 30 | | | 13 | | |
| SILK 5,0x40 | | | 40 | | | 17 | | |
| SILK 5,5x25 | 5,00 to 5,75 | | 25 | | 6,0 | 11 | VASCO+25 | |
| SILK 5,5x30 | | | 30 | | | 13 | | |
| SILK 5,5x40 | | | 40 | | | 17 | | |
| Tapered Silk+ | SILKP 4,0D3,0x30 | 3,50 to 4,25 | 2,50 to 3,25 | 12 | 10 | 4,5/3,5 | 15 | VASCO+21 |
| | SILKP 4,5D3,0x25 | 4,00 to 4,75 | 2,50 to 3,25 | 12 | 10 | 5,0/3,5 | 20 | |
| | SILKP 4,5D3,5x30 | 4,00 to 4,75 | 3,00 to 3,75 | 11 | 15 | 5,0/4,0 | 16 | |

References: 1. A French multicentric prospective registry - Systematic evaluation of all intracranial aneurysms patients treated in France with Flow diverter between October 8th 2012 and February 7th 2014, Presentation at PAIRS congress 2017 by Pr. Francis Turjman.

SILK+ is a self-expanding intracranial stent indicated for use in the treatment of intracranial aneurysms in association with embolization coils. The content of this document, in particular data, information, trademarks and logos are BALT S.A.S and affiliates' sole property. Consequently, all representation and/ or reproduction, whether in part or in full, is forbidden and would be considered a violation of BALT S.A.S and affiliates' copyrights and other intellectual proprietary rights ©2017 BALT S.A.S and affiliates all rights reserved. This document with associated pictures are non-contractual and are solely dedicated to healthcare professionals and BALT S.A.S and affiliates' distributors. The products commercialized by BALT S.A.S and affiliates shall exclusively be used in accordance with the package inserts which have been updated and included in the boxes. SILK+ is class III CE marked (LNE/G-Med CE0459) according to the Medical Device Directive 93/42/EEC since 2012. DC025GB (06/2017)

Balt Extrusion

10, rue de la Croix Vigneron, 95160 Montmorency France
 Tél. : +33 (0)1 39 89 46 41
 Fax : +33 (0)1 34 17 03 46
www.balt.fr



silk+

the original
flow diverter



silk⁺

Combining reliability & effectiveness¹

Designed for the treatment of intracranial aneurysms in association with embolization coils

82%

occlusion rate at
12 months¹

aneurysm treatment

- Adequate behaviour even in distal & tortuous anatomy

Flexibility

thanks to the nickel titanium materials

Conformability

given by the sliding-cell technology

Smooth wall apposition

as a result of the rounded short flared ends

Navigability

with VASCO+21 low profile delivery microcatheter

- Aneurysm exclusion & vessel wall reconstruction

Flow diversion & neck coverage

provided by 48 dense braided wires

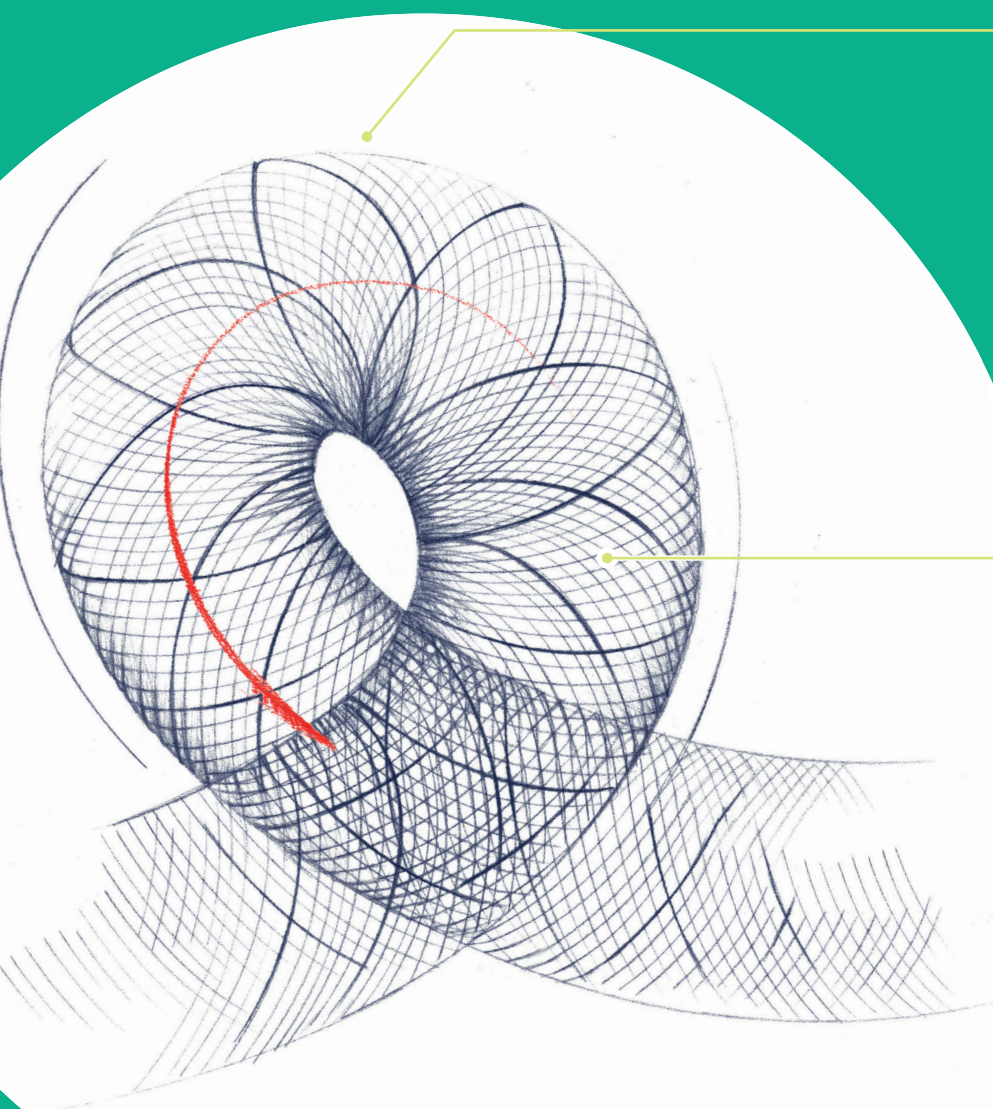
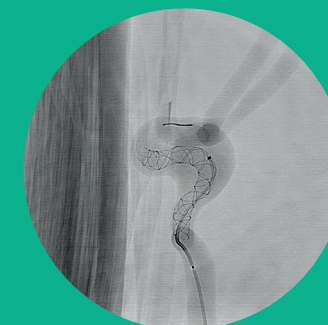
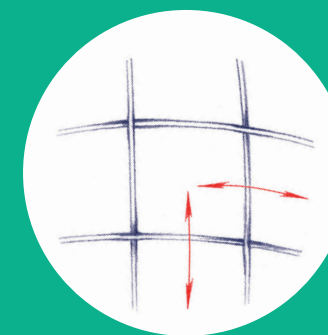
Precise & controlled deployment

Visibility

four helicoidal markers on the entire body of the stent & border effect

Resheathability

up to 90% deployed



0%

morbidity
and
mortality¹